



WPBAKERY Page Builder (formely Visual Composer)

Easy Content & Social Panels

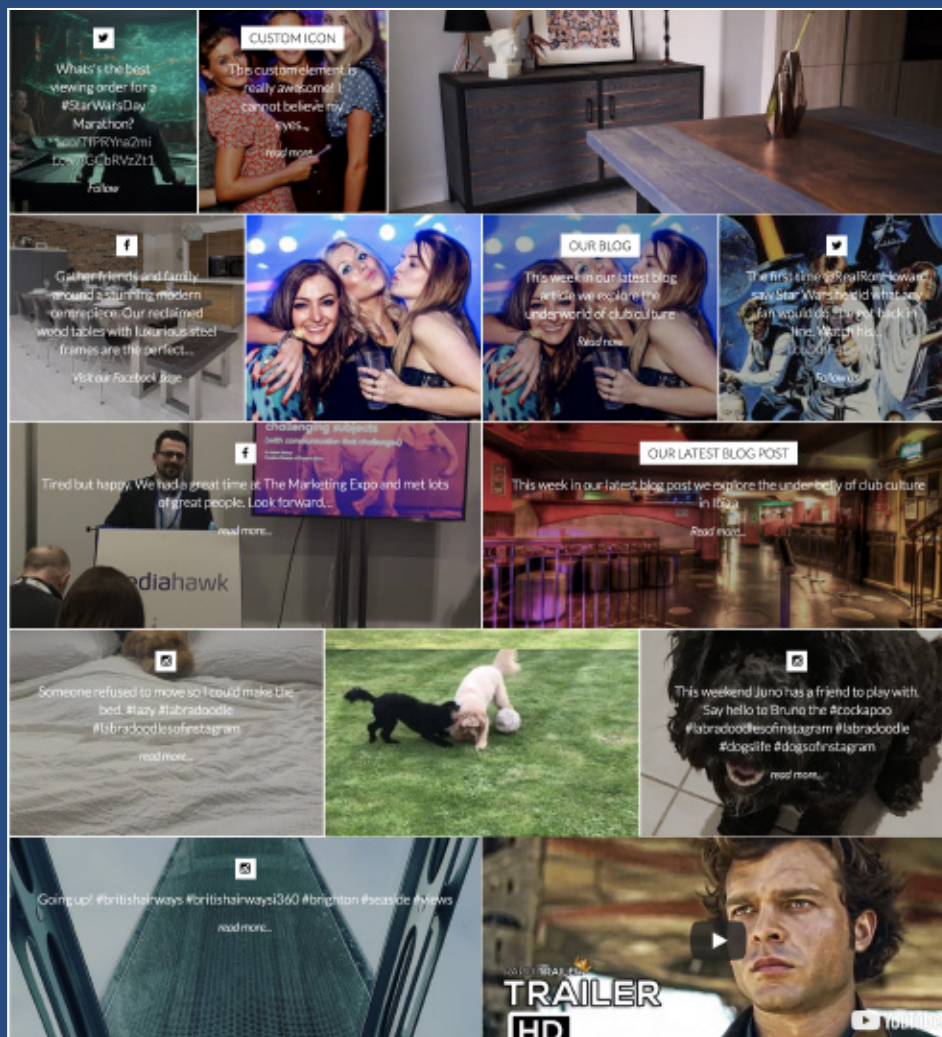


Easily add customisable, responsive, variable width panels to display a mix of your Posts, Images, Text, Twitter, Facebook, Instagram posts and Video on your website.



A guide to creating Instagram Access Tokens

Updated May 2018



Download the Easy Content and Social Panels Add On for WPBakery Page Builder at: www.contentsocialpanels.com

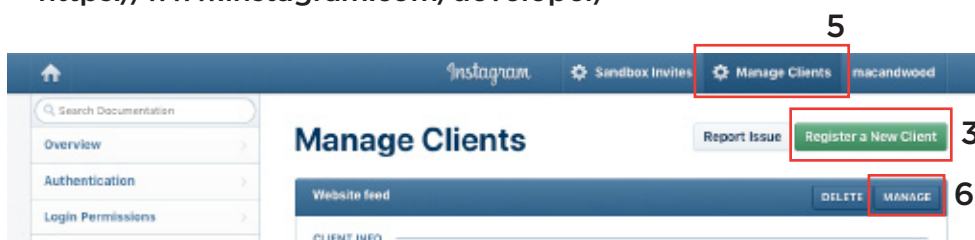


Steps for creating your Instagram access token

Please Note: On April 4th, 2018 Instagram changed their API and removed the ability to display user feeds from other Instagram accounts which are not your own. You can only display the user feed of the account which is associated with your Access Token, but it is no longer possible to display someone else's feed using your own Access Token.

1) First, login into the Instagram developer account from here:

<https://www.instagram.com/developer/>



3) Click on 'Register a New Client' button.

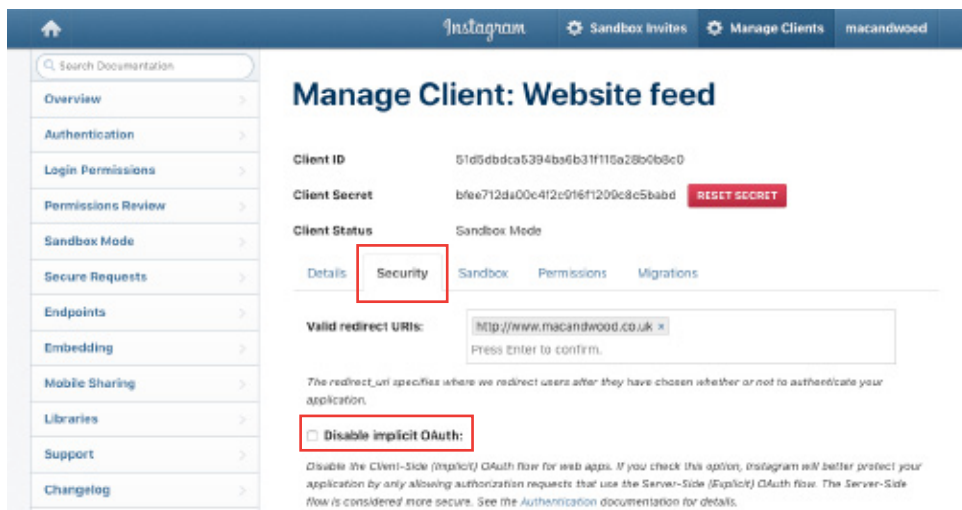
4) Fill in all the fields on the 'Register a new client' form and click on 'Register' button.

5) After that your client will display in manage client list.

6) Click on 'Manage' button on which you created.

7) Confirm all fields in the Details tab are correct.

8) Under the Security tab, make sure 'Disable implicit OAuth' is unticked.



EASY CONTENT & SOCIAL PANELS



for WPBakery Page Builder

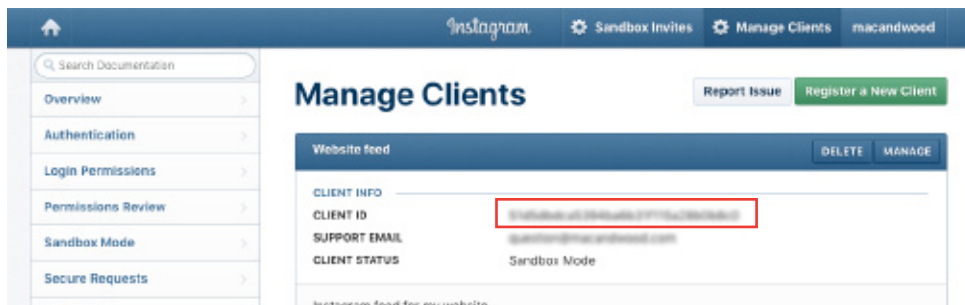
9) Next you need to run the following URL to get your Access Token

https://instagram.com/oauth/authorize/?client_id=CLIENT-ID-HERE&scope=basic+public_content&redirect_uri=http%3A%2F%2Fwww.DOMAIN-URL-HERE?return_uri=http%3A%2F%2Fwww.DOMAIN-URL-HERE&response_type=token

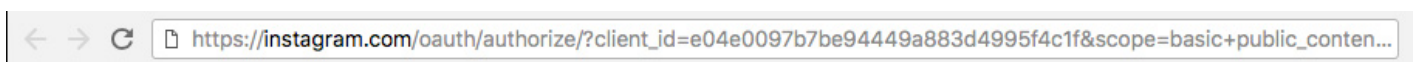
Here is an example of a working version:

https://instagram.com/oauth/authorize/?client_id=e04e0097b7be94449a883d4995f4c1f&scope=basic+public_content&redirect_uri=http%3A%2F%2Fwww.contentsocialpanels.com?return_uri=http%3A%2F%2Fwww.contentsocialpanels.com&response_type=token

10) For this to run you need Client ID, Redirect URI (which is your website domain) and Return URI (your website domain). You get your Client ID from Manage Clients area on the dashboard, see below screenshot.



11) Once you have created the URL, copy and paste the entire URL and paste this into a browser window and hit go. The URL will run and change to reveal your access token in the 'Access_Token' variable.



Example (the highlighted red long number is your Access Token):

http://www.contentsocialpanels.com/?return_uri=http%3A%2F%2Fwww.contentsocialpanels.com#access_token=5674850731.e021e0b7.475bc142581d829d890abe0802303a252

12) Now go to your website, into the Easy Panels settings in the left hand navigation and enter than Access Token the Instagram field.

That's it!

Download the Easy Content and Social Panels Add On for WPBakery Page Builder at: www.contentsocialpanels.com